

Fishing

If you're looking to catch your own dinner while you're on the road, then the Balonne Shire's rivers will no doubt prove to be the perfect catch. The rivers and waterways which traverse the Balonne Shire are renowned for Yellowbelly and Murray Cod. If you've turned up to the inland fishing capital of Queensland without the right equipment to get a line in the water then the following businesses in St George can help you out:

- The 5 Star Handimarket, JCM's Auto & Fuel and BP Service Station all sell bait
- Mitre 10, Golders, JCM's Auto & Fuel and Balonne Sports Store-Unique Egg all stock fishing line and tackle

You'll have plenty of freedom while in pursuit of 'the catch of the day' as you don't require a fishing licence here.

Closed freshwater cod season applies to the Balonne River Weir from 1st September - 30th November.

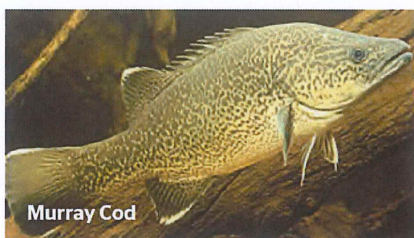
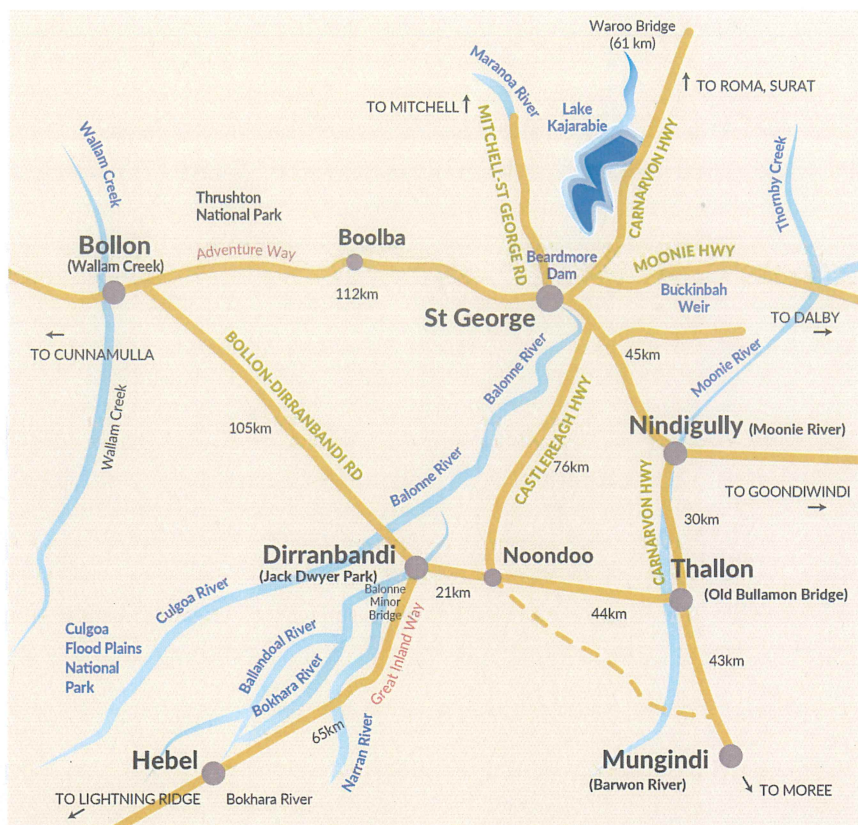
To help you get a head start, check out the list below for suggested spots to drop in a line.

- Waroo Bridge, St George (61 km north)
- Beardmore Dam, St George
- Balonne River, St George
- Buckinbah Weir, St George
- Jack Dwyer Park, Dirranbandi
- Balonne Minor Bridge, Dirranbandi
- Bokhara River, Hebel
- Wallam Creek, Bollon
- Moonie River, Nindigully
- Barwon River, Mungindi
- Old Bullamon Bridge, Thallon
- St George Riverfront Tourist Park

Fish Guide

Golden Perch (Yellowbelly)

Bronze to slate green above, sides golden olive shading to yellow or white below. Best eating fish of the western streams. The flesh is firm, white with good flavour. Average Size: [can reach 23kg in QLD]. Best Bait: Shrimp, worms & prawns. Bag Limit: 10. Minimum Size: 30cm.



Murray Cod



Yellowbelly

Murray Cod

Green above and pale cream below. The tail and dorsal fins are covered with many green spots. Average Size: 8kg-35kg. Best Bait: Small fish, do not use carp. Bag Limit: 2. Minimum Size: 60cm.

Yabbies

Blue Claw: Body is usually blue-brown, native to Queensland. Egg carrying females and young must be returned to the water. Bag Limit: 100. Red Claw not found in Balonne Shire.

Carp (Cyprinus Carpio) is also found in our waterways. Carp must not be returned to the water alive or dead.



Blue Claw Yabby

Using carp for any reason, such as for eating or use as fertiliser, is not permitted in Queensland.

Please note: Riverbanks can become inaccessible and very boggy during and after wet weather. The access can be restricted for up to two weeks.

- The spots mentioned in the map are NOT all designated camping locations but are nice spots along the river for fishing. There are limited or no facilities at these locations.
- Drought and below average rainfall can affect water levels and restrict fishing at these locations.